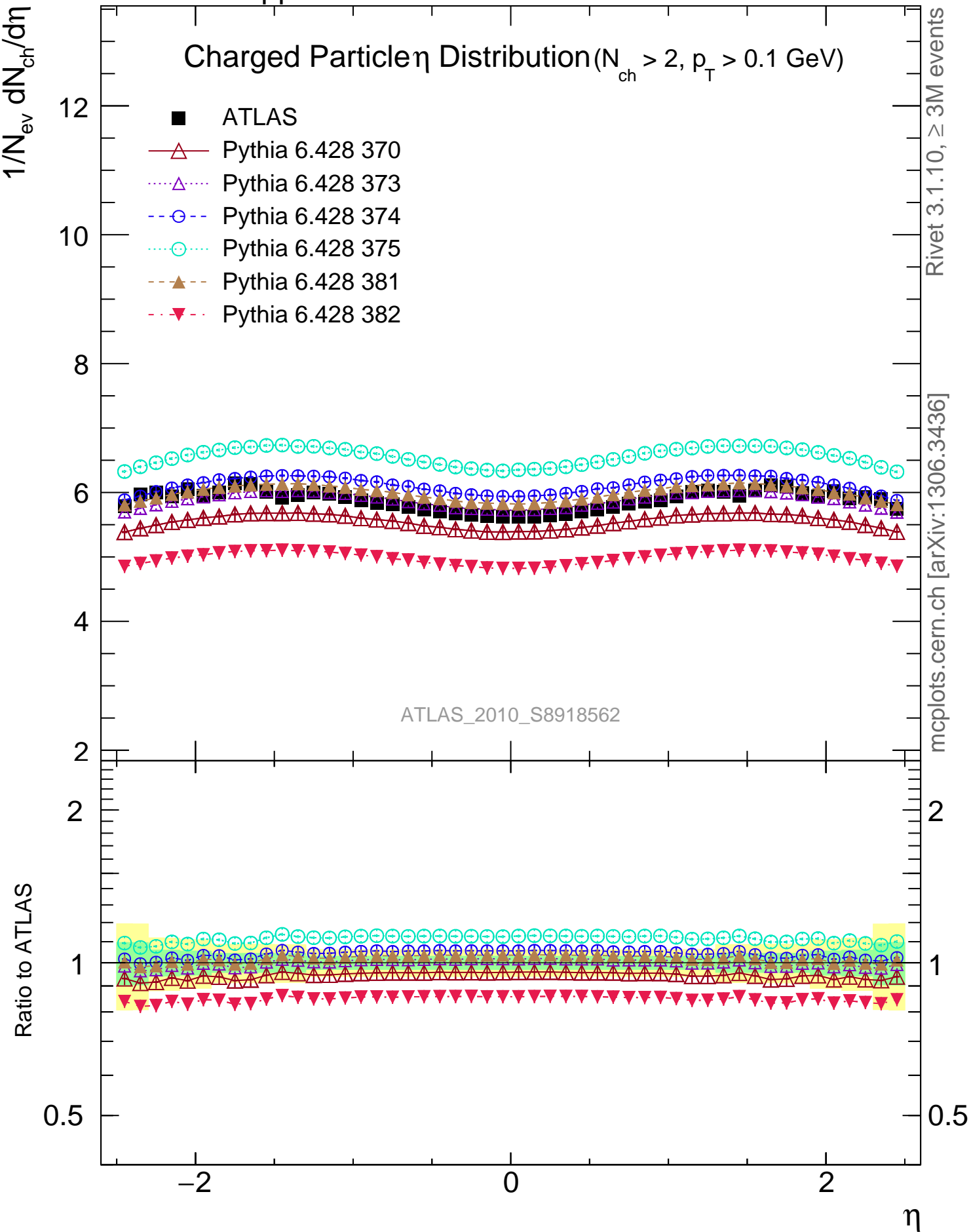


7000 GeV pp

Soft QCD

Charged Particle η Distribution ($N_{\text{ch}} > 2, p_{\text{T}} > 0.1 \text{ GeV}$)Rivet 3.1.10, $\geq 3\text{M}$ events

mcplots.cern.ch [arXiv:1306.3436]

2

1

0.5

 η